

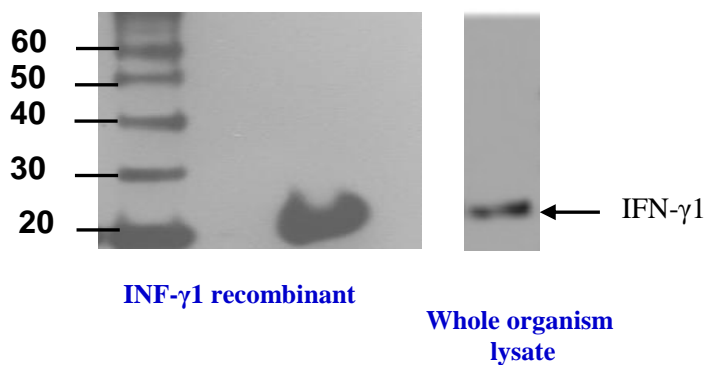
MONOCLONAL ANTIBODY DATASHEET



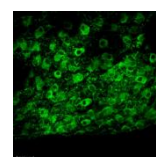
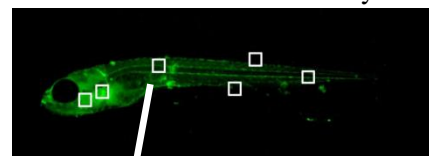
Interferon gamma 1 (IFN- γ 1)

Target species	Zebrafish (<i>danio rerio</i>)
Target antigen	Interferon gamma (IFN- γ 1)
Isotype	IgG2a, λ
Clone	N3-P3A5* A10
Purification	unpurified; supplied as hybridoma supernatant
Immunogen	ovalbumin-conjugated synthetic peptide KEDSQLHNAHP
B Cell Donor	BALB-c mouse
Fusion Partner	Ag 8563
Positive Control	ELISA- Peptide immunogen Western Blot- IFN- γ 1 recombinant Western blot- whole organism lysate IHC- zebrafish embryo
Cross-reactivity	N/A

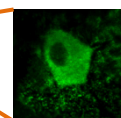
Applications		Recommended Usage Conditions
ELISA	✓	neat dilution
Western Blot	✓	1/3 dilution
IHC	✓	1/3 dilution (Inoue & Wittbrodt, 2011)



Anti-IFN- γ 1 immunostaining on whole-mount zebrafish embryo



Skin



Cytoplasmic localisation with anti-IFN- γ 1