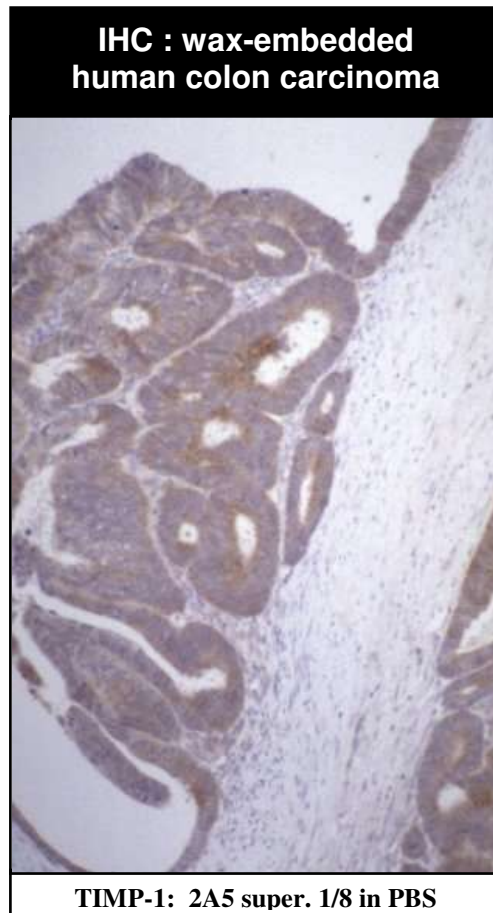


# MONOCLONAL ANTIBODY DATASHEET



## Clone 2A5, against human TIMP-1

<b>Specificity</b>	human tissue inhibitor of matrix metalloproteinases 1 (TIMP-1)
<b>Description</b>	monoclonal antibody against TIMP-1, supplied as hybridoma supernatant
<b>Isotype</b>	IgG1 <sub>κ</sub>
<b>Clone</b>	2A5
<b>Purification</b>	unpurified; supplied as hybridoma supernatant
<b>Immunogen</b>	Ovalbumin-conjugated synthetic peptide; FQALGDAADIR
<b>B Cell Donor</b>	BALB-c mouse
<b>Fusion Partner</b>	Ag 8563
<b>Positive Control</b>	<b>IHC:</b> formalin-fixed, paraffin-embedded colonic adenocarcinoma <b>western blot:</b> rhTIMP-1, 400 ng per lane
<b>Acceptance criteria</b>	(i) no X-reactivity with TIMP-2 in immunoblot, (ii) staining in antigen-positive wax-embedded tissues
<b>Cross-reactivity</b>	<b>Western blot:</b> not reactive with TIMP-2



Applications		Recommended Dilution	Recommended Pretreatment
<b>ELISA</b>	✓	undiluted	n/a
<b>Western Blot</b>	✓	1/5 dilution	n/a
<b>IHC</b>	✓	1/8 dilution	antigen retrieval: microwave 7 min @ 950W in 0.01M sodium citrate buffer, pH 6.0

Tissues tested for TIMP-1 expression using MAb 2A5	pattern of staining	reference no.
human normal gastric epithelium	-ve	1
human normal macrophage	+ve	1
human gastric adenocarcinoma	+ve in 30/74	1
human colonic adenocarcinoma	See photo above	

<b>References</b>	<b>1</b>	Murray GI, Duncan ME, Arbuckle E, Melvin WT, Fothergill JE (1998) Matrix metalloproteinases and their inhibitors in gastric cancer. <i>Gut</i> <b>43</b> : 791-797.
	<b>2</b>	Curran et al (2004) <i>Clin Cancer Res.</i> 10: 8229-8234.
	<b>3</b>	Jeffery et al (2009) <i>Histopathology.</i> 54: 820-828.
	<b>4</b>	Lyall et al (2006) <i>Clin Cancer Res.</i> 12:1184- 1191.

