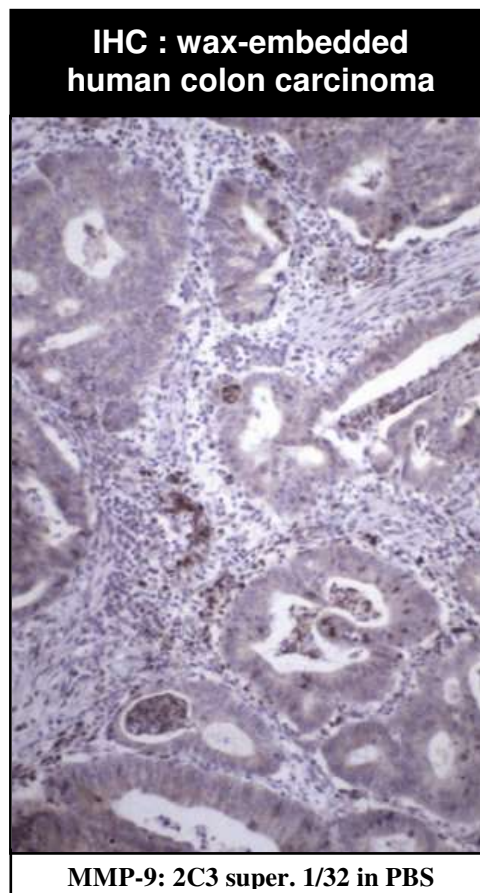


MONOCLONAL ANTIBODY DATASHEET



clone 2C3, against human MMP-9

Specificity	human matrix metalloproteinase 9 (MMP-9)
Description	monoclonal antibody against MMP-9, supplied as hybridoma supernatant
Isotype	IgG1 _κ
Clone	2C3
Purification	unpurified; supplied as hybridoma supernatant
Immunogen	Ovalbumin-conjugated synthetic peptide; KLGLGADVAQVT
B Cell Donor	BALB-c mouse
Fusion Partner	Ag 8563
Positive Control	IHC: formalin-fixed, paraffin-embedded lung containing intra-alveolar macrophage western blot: rhMMP-9, 400 ng per lane
Acceptance criteria	(i) no cross-reactivity in immunoblot panel (MMP-1, -2, -3); (ii) staining in antigen-positive wax-embedded tissues
Cross-reactivity	Western Blot: not reactive with MMP-1, -2, -3



Applications	Recommended Dilution	Recommended Pretreatment
ELISA	-	-
Western Blot	✓ 1/5 dilution	n/a
IHC	✓ 1/32 dilution	antigen retrieval: microwave 10 min @ 950W in 0.01M sodium citrate buffer, pH 6.0

Tissues tested for MMP-9 expression using MAb2C3	pattern of staining	reference no.
human normal gastric epithelium	-ve	1
human normal oesophageal epithelium	-ve	2
human normal macrophage	+ve	1
human gastric adenocarcinoma	+ve in 58/74	1
human oesophageal squamous carcinoma	+ve in 11/19	2
human oesophageal adenocarcinoma	+ve in 21/27	2
human colorectal adenocarcinoma	+ve (see picture above)	

References	1	Murray GI, Duncan ME, Arbuckle E, Melvin WT, Fothergill JE (1998) Matrix metalloproteinases and their inhibitors in gastric cancer. <i>Gut</i> 43 : 791-797.
	2	Murray <i>et al</i> (1998) Matrix metalloproteinase-1 is associated with poor prognosis in oesophageal cancer. <i>J Pathol</i> 185 : 256-261.
	3	Duncan <i>et al</i> (1998) <i>Eur. J. Biochem.</i> 258 : 37-43
	4	Curran <i>et al</i> (2004) <i>Clin Cancer Res.</i> 10 : 8229-8234.
	5	Jeffery <i>et al</i> (2009) <i>Histopathology.</i> 54 : 820-828.
	6	Lyall <i>et al</i> (2006) <i>Clin Cancer Res.</i> 12 :1184- 1191.

