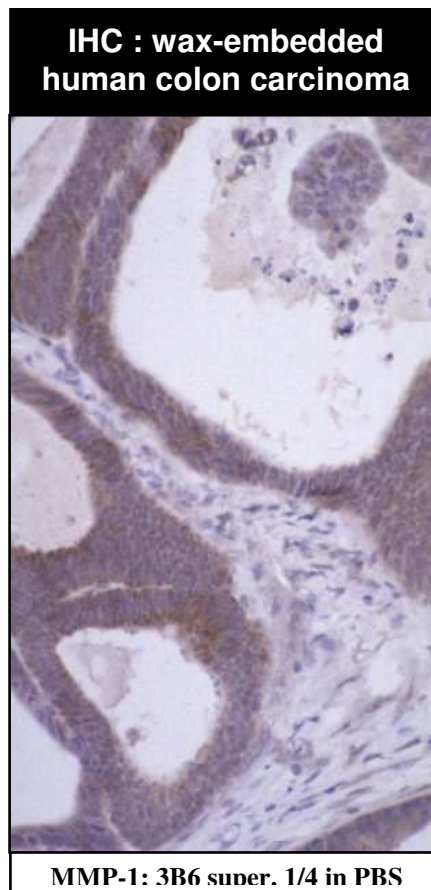


MONOCLONAL ANTIBODY DATASHEET



Clone 3B6, against human MMP-1

Specificity	human matrix metalloproteinase 1 (MMP-1)
Description	monoclonal antibody against MMP-1, supplied as hybridoma supernatant
Isotype	IgG1 _κ
Clone	3B6
Purification	unpurified; supplied as hybridoma supernatant
Immunogen	Ovalbumin-conjugated synthetic peptide; CSSFGPRTVKH
B Cell Donor	BALB-c mouse
Fusion Partner	Ag 8563
Positive Control	IHC: formalin-fixed, paraffin-embedded colonic adenocarcinoma western blot: rhMMP-1, 400 ng per lane
Acceptance criteria	(i) no cross-reactivity in immunoblot panel (MMP-2, -3, -9); (ii) staining in antigen-positive wax-embedded tissues
Cross-reactivity	not reactive with MMP-2, -3, -9



Applications		Recommended Dilution	Recommended Pretreatment
ELISA	-	-	-
Western Blot	✓	1/4 dilution	n/a
IHC	✓	1/4 dilution	antigen retrieval: microwave 10 min @ 950W in 0.01M sodium citrate buffer, pH 6.0

Tissues tested for MMP-1 expression using MAb 3B6	pattern of staining	reference no.
human normal gastric epithelium	-ve	2
human normal oesophageal epithelium	-ve	3
human normal fibroblasts	+ve	2
human colorectal adenocarcinoma	+ve in 10/64	1
human gastric adenocarcinoma	+ve in 54/74	2
human oesophageal squamous carcinoma	+ve in 3/19	3
human oesophageal adenocarcinoma	+ve in 8/27	3

References	1	Murray GI, Duncan, ME, O'Neil, P, Melvin, WT, Fothergill JE (1996) Matrix metalloproteinase-1 is associated with poor prognosis in colorectal cancer. <i>Nature Medicine</i> 2 : 461-462.
	2	Murray GI, Duncan ME, Arbuckle E, Melvin WT, Fothergill JE (1998) Matrix metalloproteinases and their inhibitors in gastric cancer. <i>Gut</i> 43 : 791-797.
	3	Murray GI, Duncan ME, O'Neil P, McKay JA, Melvin WT, Fothergill JE (1998) Matrix metalloproteinase-1 is associated with poor prognosis in oesophageal cancer. <i>J Pathol</i> 185 : 256-261.
	4	Curran et al (2004) <i>Clin Cancer Res.</i> 10 : 8229-8234.
	5	Jeffery et al (2009) <i>Histopathology.</i> 54 : 820-828.
	6	Lyall et al (2006) <i>Clin Cancer Res.</i> 12 :1184- 1191.

