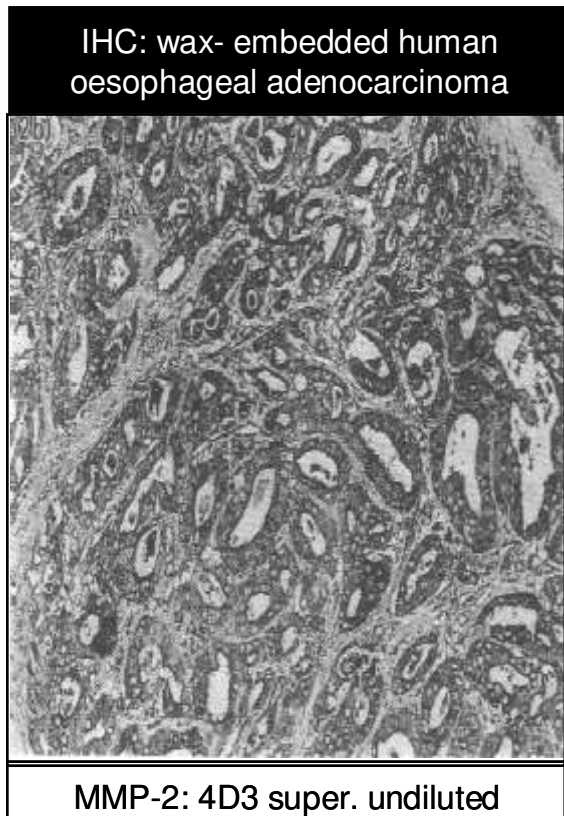


MONOCLONAL ANTIBODY DATASHEET



Clone 4D3, against human MMP-2

Specificity	human matrix metalloproteinase 2 (MMP-2)
Tested species	mouse, rat, sheep
Description	monoclonal antibody against MMP-2, supplied as hybridoma supernatant
Isotype	G1 _κ
Clone	4D3
Purification	unpurified; supplied as hybridoma supernatant
Immunogen	Ovalbumin-conjugated synthetic peptide; TSLGLPPDVQRVD
B Cell Donor	BALB-c mouse
Fusion Partner	Ag 8563
Positive Control	IHC: formalin-fixed, paraffin-embedded lung containing intra-alveolar macrophages western blot: rhMMP-2, 400 ng per lane
Acceptance Criteria	(i) no cross-reactivity in immunoblot panel (MMP-1, -9); (ii) staining in antigen-positive wax-imbedded tissues
Cross-reactivity	western blot: not reactive with MMP-1, -9, mild X-react with MMP-3



Applications		Recommended Dilution	Recommended Pretreatment
ELISA	✓	undiluted	n/a
Western Blot	✓	undiluted	n/a
IHC	✓	undiluted	antigen retrieval: microwave 5 min @ 950W in 0.01M sodium citrate buffer, pH 6.0

Tissues tested for MMP-2 expression using MAb 4D3	pattern of staining	reference no.
human normal gastric epithelium	-ve	1
human normal oesophageal epithelium	-ve	2
human normal macrophage	+ve	1
human gastric adenocarcinoma	+ve in 70/74	1
human oesophageal squamous carcinoma	+ve in 14/19	2
human oesophageal adenocarcinoma	+ve in 22/27	2

References	1	Murray GI, Duncan ME, Arbuckle E, Melvin WT, Fothergill JE (1998) Matrix metalloproteinases and their inhibitors in gastric cancer. <i>Gut</i> 43 : 791-797.
	2	Murray GI, Duncan ME, O'Neil P, McKay JA, Melvin WT, Fothergill JE (1998) Matrix metalloproteinase-1 is associated with poor prognosis in oesophageal cancer. <i>J Pathol</i> 185 : 256-261.
	2	Curran et al (2004) <i>Clin Cancer Res.</i> 10 : 8229-8234.
	3	Jeffery et al (2009) <i>Histopathology.</i> 54 : 820-828.
	4	Lyall et al (2006) <i>Clin Cancer Res.</i> 12 :1184- 1191.

