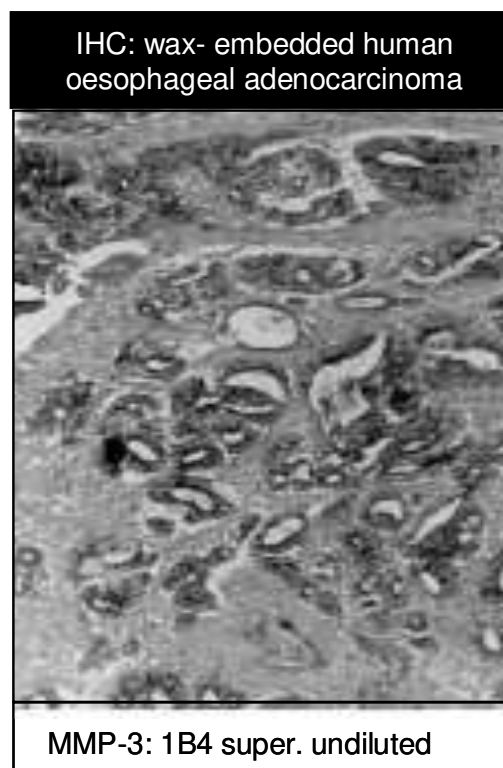


MONOCLONAL ANTIBODY DATASHEET

Clone 1B4, against human MMP-3

| | |
|-------------------------|---|
| Specificity | human matrix metalloproteinase 3 (MMP-3) |
| Description | monoclonal antibody against MMP-3, supplied as hybridoma supernatant |
| Isotype | IgG1 _κ |
| Clone | 1B4 |
| Purification | unpurified; supplied as hybridoma supernatant |
| Immunogen | Ovalbumin-conjugated synthetic peptide; CKSLRKLEPELH |
| B Cell Donor | BALB-c mouse |
| Fusion Partner | Ag 8563 |
| Positive Control | IHC: formalin-fixed, paraffin-embedded lung containing intra-alveolar macrophages western blot: rhMMP-3, 400 ng per lane |
| Cross-reactivity | western blot: not reactive with MMP-1, MMP-2, MMP-9 |



| Applications | | Recommended Dilution | Recommended Pretreatment |
|---------------------|---|----------------------|--|
| ELISA | ✓ | undiluted | n/a |
| Western Blot | ✓ | undiluted | n/a |
| IHC | ✓ | undiluted | antigen retrieval: microwave 5 min @ 950W in 0.01M sodium citrate buffer, pH 6.0 |

| Tissues tested for MMP-3 expression using MAb 1B4 | pattern of staining | reference no. |
|---|---------------------|---------------|
| human gastric adenocarcinoma | +ve in 20/74 | 1 |
| Human intra-alveolar macrophages | +ve | 2 |

| | | |
|-------------------|----------|---|
| References | 1 | Murray GI, Duncan ME, Arbuckle E, Melvin WT, Fothergill JE (1998) Matrix metalloproteinases and their inhibitors in gastric cancer. <i>Gut</i> 43 : 791-797. |
| | 2 | Murray GI, Duncan ME, O'Neil P, McKay JA, Melvin WT, Fothergill JE (1998) Matrix metalloproteinase-1 is associated with poor prognosis in oesophageal cancer. <i>J Pathol</i> 185 : 256-261. |
| | 2 | Curran et al (2004) <i>Clin Cancer Res.</i> 10 : 8229-8234. |
| | 3 | Jeffery et al (2009) <i>Histopathology.</i> 54 : 820-828. |
| | 4 | Lyall et al (2006) <i>Clin Cancer Res.</i> 12 :1184- 1191. |

