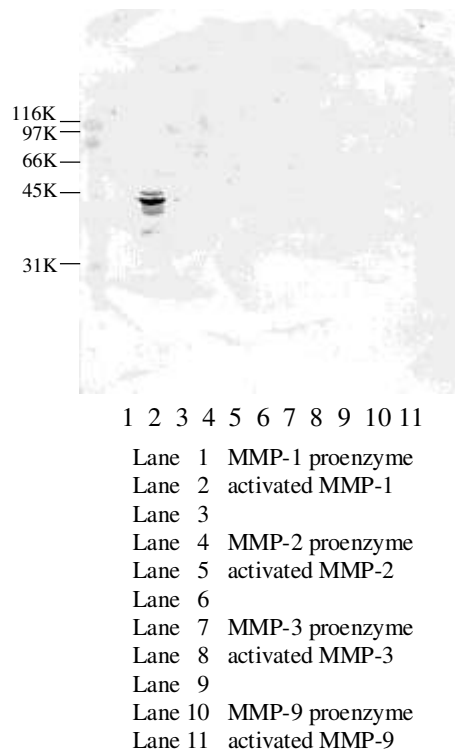


# MONOCLONAL ANTIBODY DATASHEET

## clone 5C10 against human actMMP-1

<b>Specificity</b>	<i>activated</i> human matrix metalloproteinase 1 (MMP-1)
<b>Description</b>	monoclonal antibody against <i>activated</i> MMP-1, supplied as hybridoma supernatant
<b>Isotype</b>	IgG1 <sub>κ</sub>
<b>Clone</b>	5C10
<b>Purification</b>	unpurified; supplied as hybridoma supernatant
<b>Immunogen</b>	Ovalbumin-conjugated synthetic peptide; FVLTEGNPRGGC
<b>B Cell Donor</b>	BALB-c mouse
<b>Fusion Partner</b>	Ag 8563
<b>Positive Control</b>	<b>western blot:</b> Activated recombinant MMP-1, 400ng per lane
<b>Cross-reactivity</b>	<b>western blot:</b> not reactive with proenzyme MMP-1, or proenzyme or active forms of MMP-2, -3, -9



Applications		Recommended Dilution	Recommended Pretreatment
<b>ELISA</b>	ND	n/a	n/a
<b>Western Blot</b>	✓	1/10	n/a
<b>IHC</b>	ND	n/a	n/a